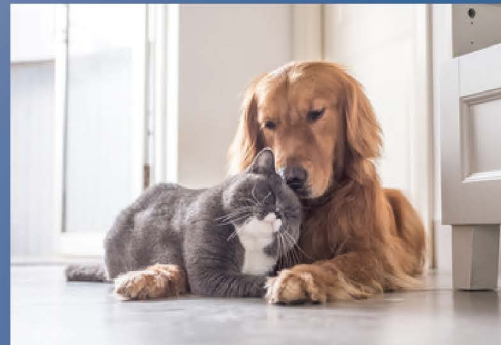




## Scalable from one store to an Enterprise



# LIGHTNING ONLINE POINT OF SALE® FACTS

## Scalable from One Store to an Enterprise

Single store operators, to multi-store environments to national franchises, Lightning has the technology, support, and experience.

## Fast, Secure, and Versatile Point of Sale

Lightning runs in your browser, on your iPad, mobile device, and tablet.

## Software Upgrades Included

Automatically have the latest version of the entire Lightning family of products.

## Robust Marketing Center Included

More than your typical inventory counter.... much more than point of sale.

## Your Data Converts to Lightning

Inventory, departments, vendors, customers, sales history, purchases, and more. Lightning seamlessly converts your data.

\*limitations and additional fees may apply

## Tried & Trusted

29+years in service. More than 90% of businesses convert from other systems.

## Point of Sale / E-Commerce

Seamlessly working together, the data, inventory levels, customer history, gift cards, rewards data and more are as real-time as it gets.

## Technical Support

We answer on the 2nd ring. No hold times...Really





# Lightning Online POS

## Sign In

Start by signing in to our secure, encrypted site.

**LIGHTNING ONLINE**  
POINT OF SALE

You have successfully logged out

Employee ID :

Password :

Store # :

Clear Submit

☐ Let us remember your Employee ID, Password & Store Number.  
\*If you share this computer with others we strongly recommend you not check this box.

**Recent Enhancements**

**Inventory Item Script:** The clerk can be prompted with a message when selling an item. I.E. Let customer know if they buy two the third one is free.

**Data Entry Screens:** We have redesigned the customer, inventory, vendor and employee data entry screens.

**The Employee Security screen** was greatly improved when setting access/no-access. Much easier to navigate.

**Great Feature:** If your business

## Lightning supports various browsers



# Ring Sales Easy

Our easy to operate Ring Sales screen requires little training.

Mon 09/16/19Legal Dt: 09/16/98

Johnson, Dennis [E-dit]  
45 Lakeview Dr  
New Rochelle, NY 10801  
[Customer Profile](#)

(914) 555-1983 M  
[dennis454@gmail.com](#)  
Last Purchase : 09/16/19  
Store Credit \$50.00

Sub - Total \$149.75  
Sales Tax \$12.29  
Total \$163.04

SKU/CMD

Misc.

Customer Notes

Reprint Inv. | Adv. Search | E-Commerce

Total Items : 5

	Description	Size	Qty	Price	% Disc.	P	Ext.
<input checked="" type="checkbox"/>	1 DEWAR'S 12 YR OLD	1.0L	1	49.99			49.99
<input type="checkbox"/>	2 ANCIENT PEAKS MERLOT	.750L	2	19.99			39.98
<input type="checkbox"/>	3 ALPHA OMEGA CHARDONNAY	.750L	1	30.99			30.99
<input type="checkbox"/>	4 Absolut 100 Vodka	.750L	1	28.79	10.000		28.79

Select Shipping Address: (if no address is selected, the billing address will be used)

Log Off EMP: TG1

PRICE CHK

Alt F2 - INVENTORY

Alt F3 - CUSTOMERS

CLR SCREEN

TOUCH MENU

HELP: Station 2

Enter - End transaction

Alt F7 - DISCOUNT

HOLD SALE

BLANK LINE

Alt F10 - EXTRAS

EXIT RING SALES

## Multiple Options

Extras

Total

Review / Print Unclosed Invoices

Enter an Expense

Test Hardware

Total Sales

Open Cash Drawer

Tax Exempt Invoice

Customer History

Return

MEMO

Drink Recipes

Enter an In House Use

Ship

Gift Cards

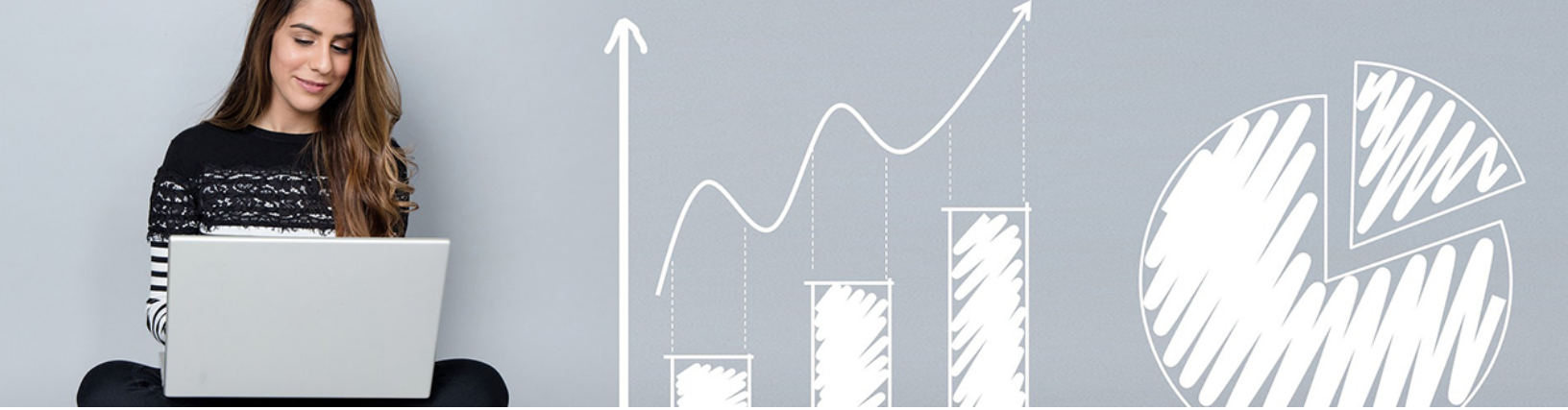
Void Invoice

Apply Coupon

Back from EXTRAS

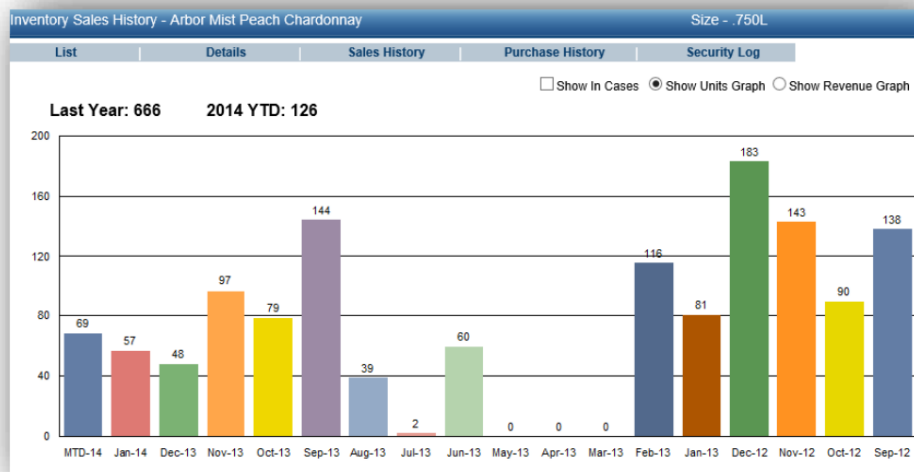
Employee Time Clock

Cash Drop



## Inventory Sales Graph:

Lightning Online Point of Sale displays eighteen months of inventory sales history. You can view data by the bottle or case if needed, returns, promotions, and more.



## Streamline Inventory Recording

Inventory receiving has never been better. Every keystroke has been thought out carefully to ensure your receiving sessions are a *Lightning* experience.

Receive Products

Vendor: Apollo Fine Spirits

ITEM INFO BOX

CALICO JACK SPICED RUM 1.0L, Price: \$11.99 Edit Price

Old Margin: 25.02% New Margin: 27.02% Old Markup: 33.37% New Markup: 37.03%

Description	Size	Cases	Units	Unit Cost	Case Cost	%Change	Extension	
<input type="checkbox"/> ABSOLUT 80 VODKA	1.0L	5	0	19.39	232.68		1163.40	P S Edit
<input type="checkbox"/> ABSOLUT CITRON	1.0L	10	0	18.96	227.52	▼ 2.00%	2275.20	P S Edit
<input type="checkbox"/> DEKUYPER PEACHTREE SCHNAPPS	1.0L	3	0	9.86	118.32	▲ 5.00%	355.00	P S Edit
<input type="checkbox"/> DEWAR'S 12YR 12 YR SPECIAL RESERVE	.750L	10	0	27.60	331.20		3312.00	P S Edit
<input type="checkbox"/> FAIRBANKS SHERRY	1.5L	4	0	8.15	48.90		195.60	P S Edit
<input type="checkbox"/> GALLO FAMILY VINEYARDS CAFE MERLOT	1.5L	10	0	6.73	40.38	▲ 5.00%	404.00	P S Edit
<input type="checkbox"/> CABO WABO BLANCO	.750L	10	0	23.67	142.02	▲ 1.00%	1420.00	P S Edit
<input checked="" type="checkbox"/> CALICO JACK SPICED RUM	1.0L	5	0	8.75	105.00	▼ 3.00%	525.00	P S Edit

Invoice Total : \$ 9,650.20 Clear Alt F2 Inventory End Transaction SKU/COMMAND



## Advanced Discounts



Our Advanced Discount Groups allow automatic discounts to be applied at the register once a predetermined number of qualifying items are sold.

Discounts can be set up by a fixed dollar or percentage.  
Easy setup ... impressive results.

## Marketing Center



Lightning offers multiple tools to promote your business. More than Point of Sale, Lightning can capture key demographics on your customers. Promote your business with these vital business data.

**Reach** out to customers who haven't visited in a while

**Alert** customers when their favorite items arrive

**Realize** what customers purchase at which prices

**Produce** new customer reports or anything else you could think of

## Loyalty Rewards Program



Keep your customers coming back by setting up a loyalty rewards program. From one location to multiple, Lightning handles it. Just swipe the customer's rewards card or use their mobile number.

A full array of reports are available at the back end, from points given/redeemed per day to detailed tracking by customer/date range. The above report represents all 'Points Rewarded' for a given time frame.

The same type of report is available for '*Points Redeemed.*'





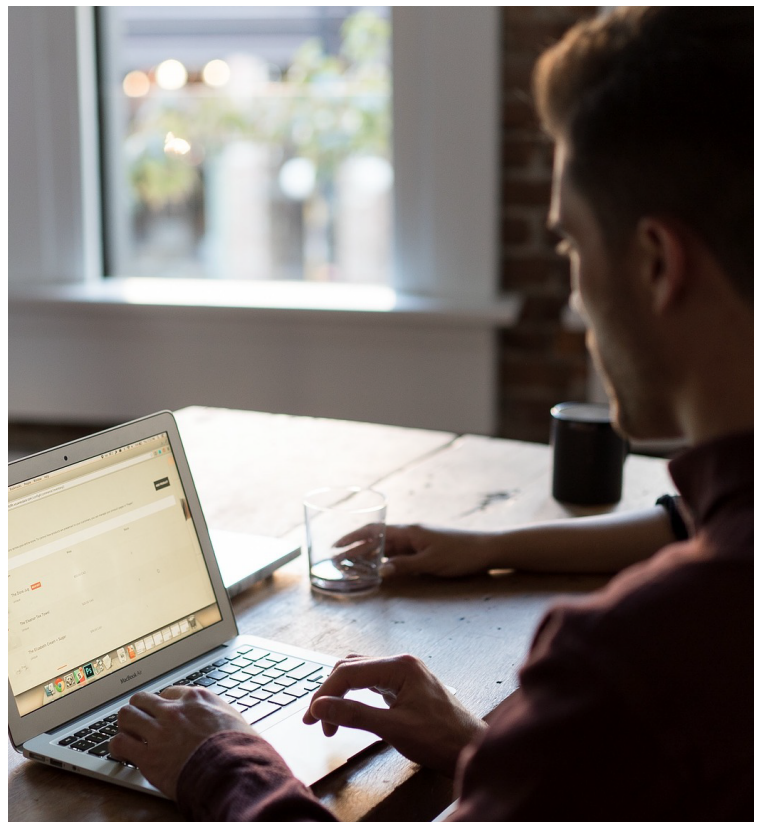


## All-in-One Credit Card Device

- Process credit cards with our all in one device.
- Complete with credit, debit, and signature capture.
- No need for years of signed paper receipts. Plus, in most environments, no signature is required for transactions that are under \$25.00.

## Work from anywhere: your home, café...

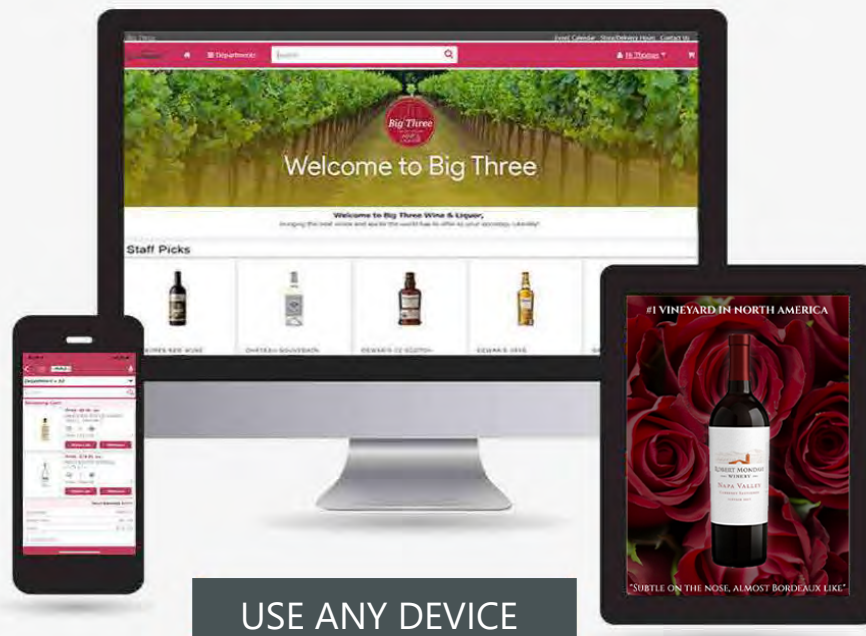
- Since Lightning is an online application you will have complete access to your store from anywhere.
- No third-party software required. Check today's sales, drill down on voided transactions, returns.. full access is yours. Simply open your browser OR use our iPad and iPhone application.



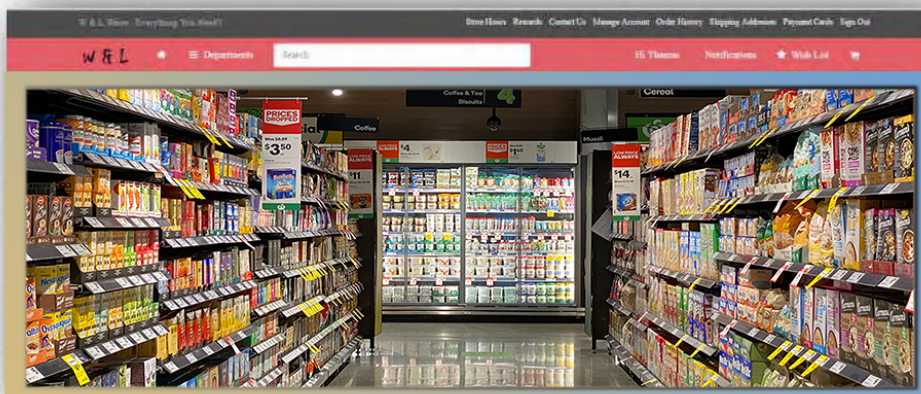


# Lightning E-Commerce

Since Lightning Online Point of Sale and Lightning E-Commerce are both developed by us, we offer a completely integrated solution. No need for double entries.

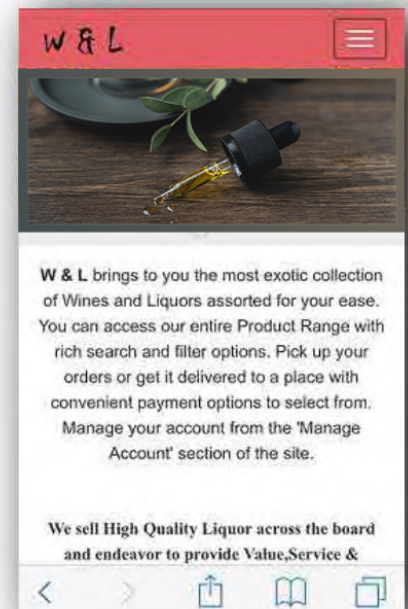


USE ANY DEVICE



DESKTOP VIEW

MOBILE VIEW



## Integrated Inventory

In-store inventory quantities are instantly streamed to your E-Commerce site, which includes price changes, descriptions, images, meta tags, alt captions, return and shipping policies along with all other product properties. The data flow is real-time as we understand accurate inventory between the store and your website is essential to your business.

## Integrated Reward Programs

If you utilize one of our three Lightning rewards programs, customers can earn points and redeem their rebates directly on your website.

## Wish List

Visitors can create a personalized 'Wish List.' Then automatic emails can be enabled to remind customers that their desired items are on their Wish List.

## E-Commerce Dashboard

View Pending Orders, Canceled Orders, Contact Us Inquiries and Job Postings.

## Enable Google Analytics

Insert Google Analytics embed codes within your site, for free, which enables robust web analytics reporting with Google.

## Customers

Customers can access their sales history, from In-store to online, manage their rewards, review their stored shipping/delivery addresses, review their stored credit card, place quick re-orders and more. Give your customers the power.

## Display Drink Recipes\*

*\*industry specific*

Items that contain keywords I.E. Vodka, Rum, Whiskey, Tequila, Bourbon in the description, allows users to have a drink recipe emailed to them.

## Event Calendar

Post upcoming events at your store, from wine tastings and more.

## Live Chat

Activate our live chat on your site. Never miss a customer again.

## ADA Compliant\*

OPTIONAL, ensure your website is compliant with the Americans with Disabilities Act (ADA).



## Mobile Apps Included

Your own, custom-branded mobile app is included. Very similar to the website, as your customers can use your mobile app to place orders for delivery, pickup at the store, manage their account, review purchase histories, process quick re-orders...and much more.





# Emergency Mode

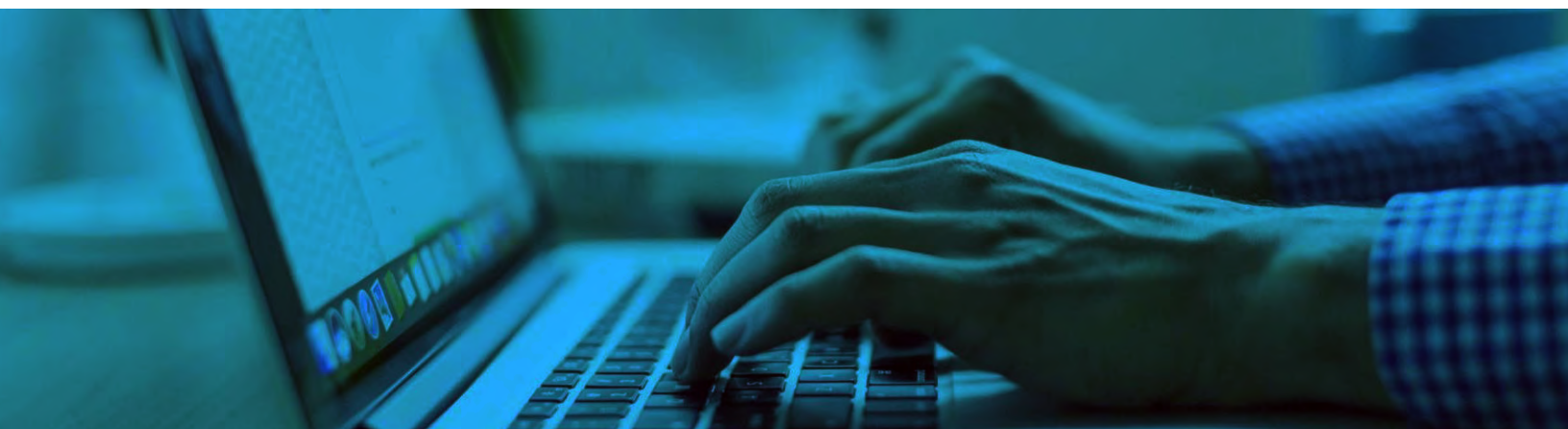
**What if my internet connection is down?** Lightning has you covered.

Since Lightning Online Point of Sale is contingent on your store's internet connection, what happens if your store or one of our multiple servers experiences a connectivity issue?

With Lightning Emergency Mode, your business can continue to check-out customers while the connectivity issues are being resolved in the background.

The screenshot shows the Lightning POS interface in Emergency Mode. The top bar is blue and contains the date "Thu 12/31/15", "Legal Date", "Station 1", and "12/31/1994". The center of the top bar has a large red "Emergency Mode" label with a close button. The right side of the top bar shows a summary of the transaction: "Sub - Total \$42.98", "Sales Tax \$3.51", "Deposits \$0.00", and a bold "Total \$47.87". Below the top bar is a table with columns: "SKU / COMMAND", "Sr.", "Description", "Size", "Qty", "Price", "% Disc", "P", "Ext.", and "Pts.". The table contains two items: "14 HANDS CHARDONNAY" (750ML, Qty 1, Price 10.99) and "DANCING BULL ZINFANDEL" (750ML, Qty 3, Price 10.99). The bottom of the screen features a dark blue bar with a "Log Off" button, a "Merge Emergency Mode Data to Online System" button, and a row of function buttons: "ENTER - End Transaction", "F2 INVENTORY", "F7 DISCOUNT", "F3 CUSTOMER", "CLR SCREEN", "BLANK LINE", "EXTRAS", and "TOUCH MENU". The bottom right corner displays "Store #: 7365".

SKU / COMMAND	Sr.	Description	Size	Qty	Price	% Disc	P	Ext.	Pts.
	1	14 HANDS CHARDONNAY	750ML	1	10.99			10.99	11
	2	DANCING BULL ZINFANDEL	750ML	3	10.99			32.97	33







# Lightning Corporate Office

Lightning Corporate Office allows our multi-store retailers and national franchise operators to control their network of locations from a single dashboard in real time.

## Strong Employee Control

When an employee is added in Lightning Corporate Office, he/she will have access rights across your global network, based on settings that are easily defined.



## Multiple Sales Reports

A full array of sales reports can be run, for a single location in California, to an Area Representatives territory, to the entire network. All data, including our reporting tools are real-time with multiple filtering options and will certainly impress.

## New Vendors

Lightning Corporate Office allows our multi-store retailers and national franchise operators to control their network of locations from a single dashboard in real time.

## E-Commerce

Manage your E-commerce enterprise from an insightful dashboard. Our "My Dashboard" feature provides analysis into the day's online ordering activity, such as delivery requests, will pick up at the store, shipping, and more. Performance metrics per location is a click away. Want more, just ask.

## Royalties

Franchise operations can define royalty percentages, which will trigger a commercial ACH debit, for the franchise fees and national advertising programs.

## Area Representatives

Area Representatives can be defined for franchise environments where warranted. From royalties of their territory sales performance, and more. We have the tools.

## Technical Service

All Lightning Corporate Office users, will experience the same level of technical support that the retail stores have. Answer on the second ring with zero hold time, or a very quick response to email inquiries. When you care, it really shows. Your business is always appreciated.



# Lightning Digital Marketing

Lightning Online P.O.S. retailers can take advantage of an array of P.O.S. technologies that *offers to advertise products and services to better connect with their customers.*

The technologies, **Lightning Enhanced Pole Display** & the **Lightning In-Store Kiosk** are provided at no fee, in most situations, to merchants who subscribe to the Lightning Online P.O.S. system.



## Enhanced Pole Display:

Our innovative enhanced pole display utilizes an 8" tablet for a perfectly sized crisp visual experience for transaction detail at the point of check out.

When the register is idle, streaming ads (non-audio) featuring products available in most wine & spirit retailers, will loop in intervals in an attractive and vivid imagery. There is no upkeep on your end as all images are maintained by us.

## In-Store Kiosk:

Our Lightning In-Store Kiosk, utilizes your store's data, in real-time, which provides an interactive collaboration between the store and your customer. It's an opportunity to educate, inform, inspire and promote your business.

The Lightning Kiosk allows your customer to quickly perform inventory look-up, price checks, gift card balance checks, loyalty status, food pairing, sign-up new customers, and promote specific products or new arrivals.



**Computer Perfect, the developers of the Lightning P.O.S. Technology Platform is more than a point of sale company, as we encompass technologies retailers need, from the in-store point of sale, e-commerce, enhanced pole displays, and kiosk services. Elevate your business with Lightning.**

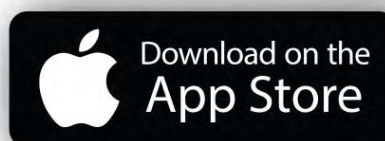
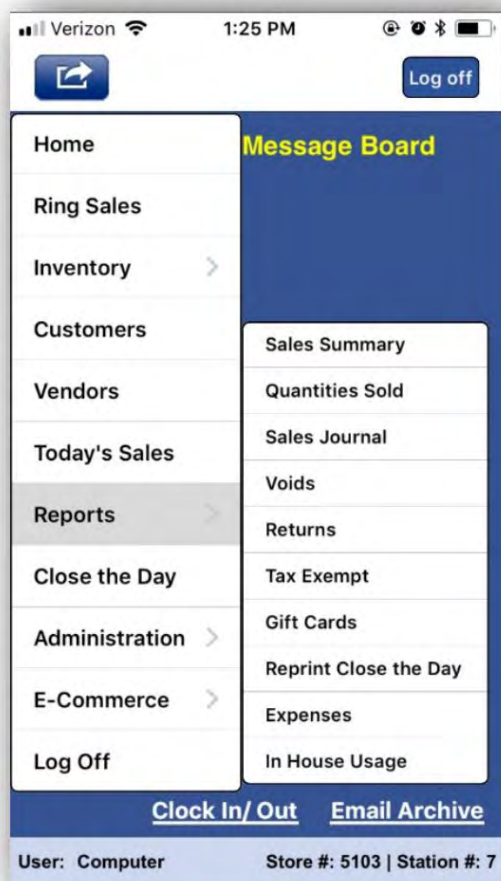


# iPad & iPhone



Ring Sales, process credit cards, check today's sales, run sales reports, adjust employee security settings, have full access to your inventory, and more ... in realtime. Exactly like Lightning Online Point of Sale for your browser, Lightning for the iPad and iPhone displays the identical information with the same look and feel. In the palm of your hand. Real-time data, from ringing sales, running sales reports, and more.

Feel the power of Lightning Online Point of Sale for the iPad and iPhone.



# Contact Us

## **Thomas Greco**

Founder

Office: (914) 633-8959

Mobile: (914) 419-8526

tom@computerperfect.com



@computerperfectpos



@Lightning Online POS

[www.computerperfect.com](http://www.computerperfect.com)

## **Vincent Groccia**

President

Office: (914) 633-8959

Mobile: (203) 257-6243

vincent@computerperfect.com



**Retail POS Technology Platform**



***Thank you!***