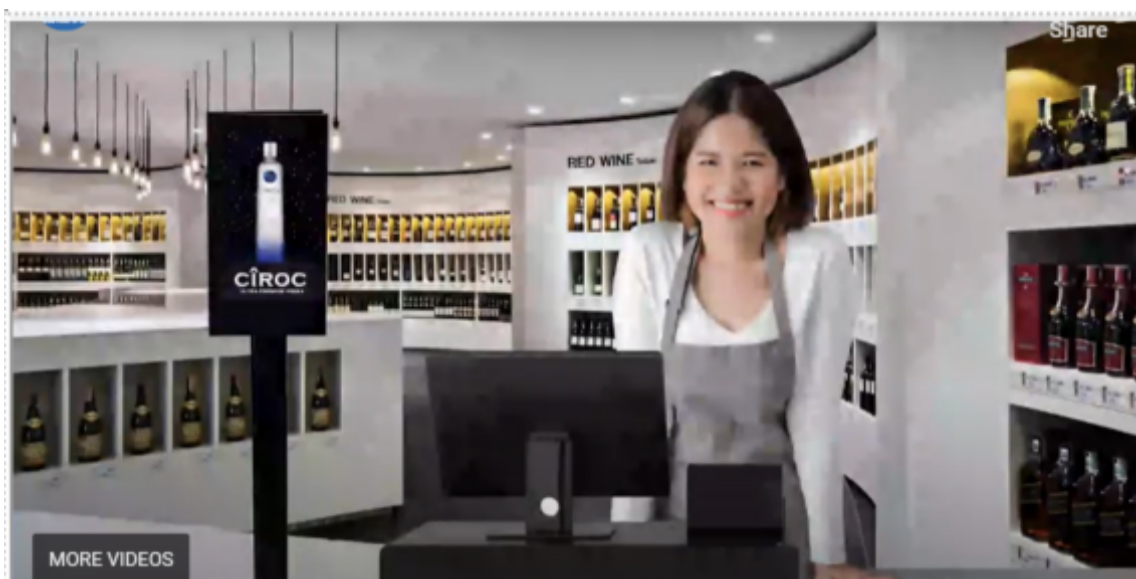


## Does your store enjoy the Lightning Enhanced Pole Display advantage?



Dear Customer,

One small step you take today could provide your store with the vibrancy and excitement that affords your customer a truly delightful shopping experience. Our innovative Lightning Enhanced Pole Displays are designed to combine visual appeal with additional value-added features at the check-out.

### Visual Appeal

The Lightning Enhanced Pole Display uses a slick looking 8" tablet that takes up minimum space and affords an appealing modern design. The transaction details are clear and easy to read. Perfectly sized, it offers a crisp visual experience at the point of check-out. Check it out for yourself below.

Enhanced Pole display

### Value-Added Benefits

When the register is idle, streaming ads (non-audio) feature the products available in your store alternating with attractive and vivid imagery. This gives you an opportunity to beam advertising and promotional messages directly to your target audience.

### Amazingly Affordable

Best of all, once you have purchased the Lightning Enhanced Pole Display (\$325 in most cases) and paid a monthly monitoring fee (\$4.49 per piece), there is no further cost or effort of upkeep for you. Computer Perfect will take care of ensuring that the Lightning Enhanced Pole Display works smoothly, and all images are maintained by us.

Ready to take your store to the next level now? Give us a call on 914 633 8959.

Regards

**Vincent Groccia**

President

Computer Perfect

[vincent@computerperfect.com](mailto:vincent@computerperfect.com)

Office: (914) 633-8959

