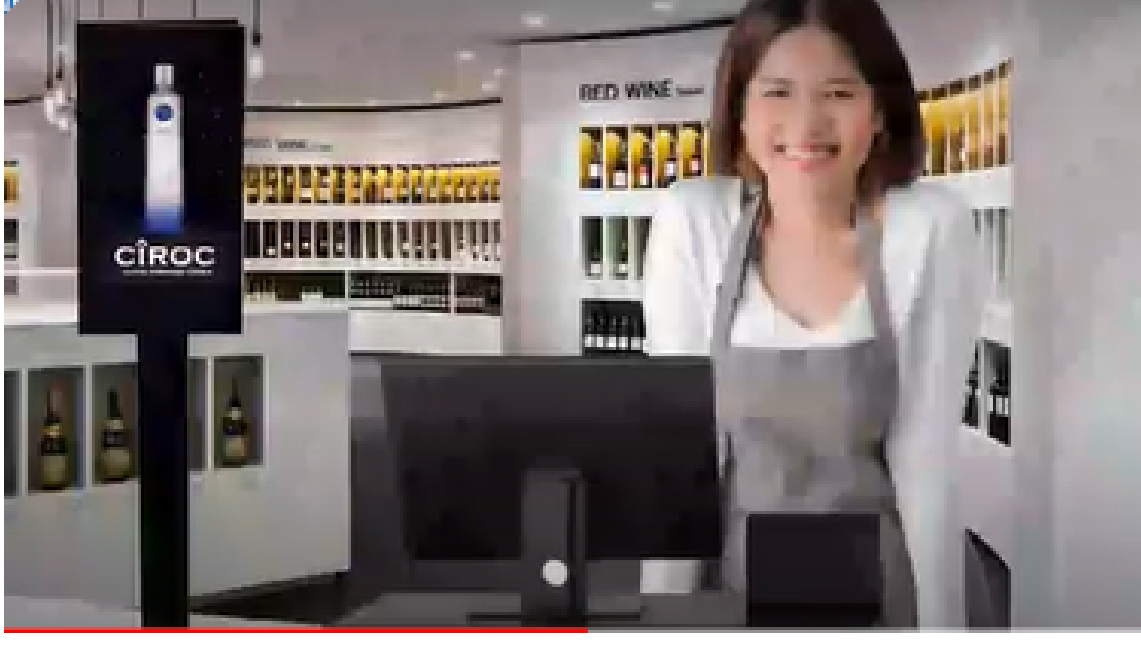


Dear Customer,

Hundreds have opted for it. Here's why you should too



If you have not yet taken advantage of our **Lightning Enhanced Pole Display**, it is still not too late. Just one small step will fill your store with visual vibrancy and excitement that affords your customer a truly delightful check out experience.

Visual Appeal

The Lightning Enhanced Pole Display uses a slick looking 8" tablet placed at the check-out area. It has an appealing modern design, signaling to your customers that your store is in-step with the latest digital technology. The transaction details on the screen are perfectly sized, crisp, clear and easy to read which includes your store branding.

Value-Added Benefits

When the register is idle, streaming ads (non-audio) feature the products available in your store alternating with attractive and vivid imagery. Display information to your clients to joint your rewards program, direct them to your website...it is time to think outside the box.

Amazingly Affordable

The Lightning Enhanced Pole Display costs \$325 (in most cases), plus a monthly monitoring fee of \$4.49.

Take Action Now

Reply to this email if you have any questions.

Thomas Greco

Mobile: (914) 419 8526

